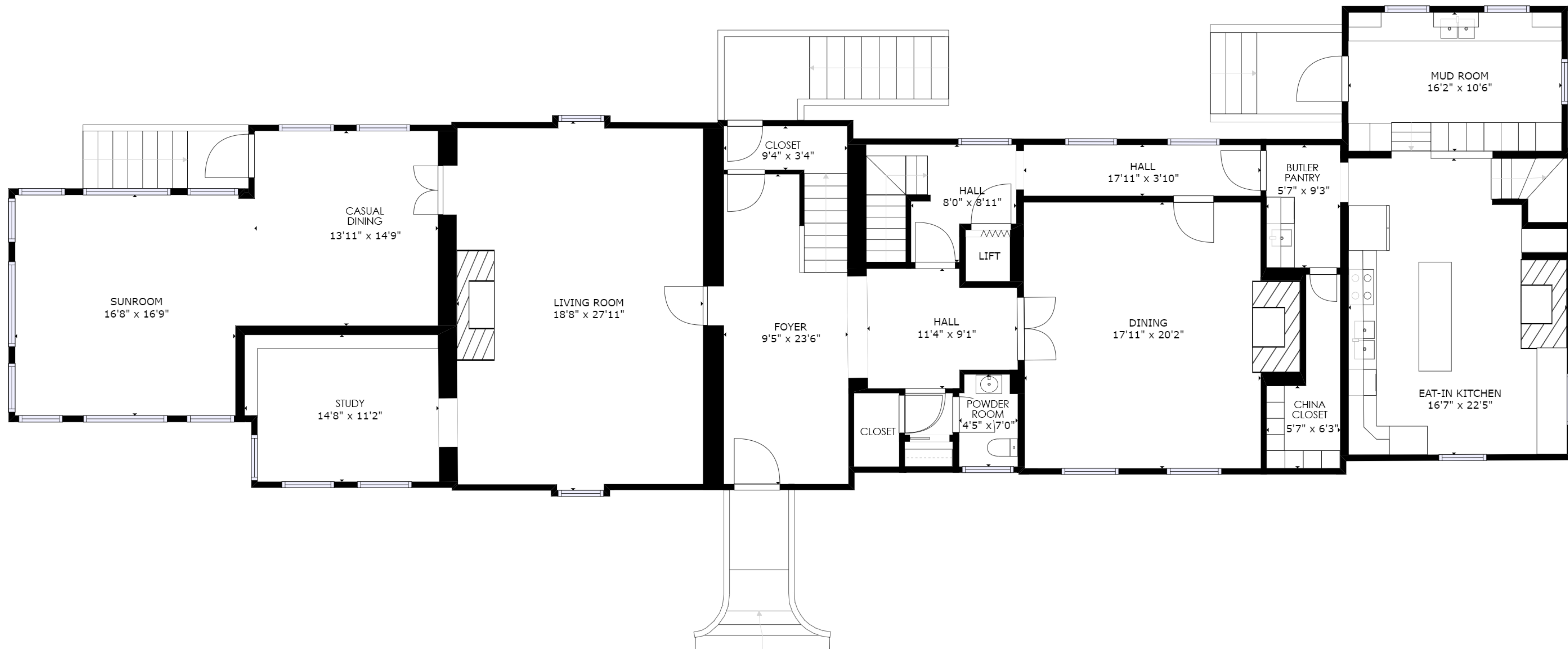


BASEMENT

GROSS INTERNAL AREA
 FLOOR 1: 1962 sq ft, FLOOR 2: 2988 sq ft
 FLOOR 3: 1682 sq ft, FLOOR 4: 588 sq ft
 EXCLUDED AREAS: , REDUCED HEADROOM BELOW 1.5M: 61 sq ft
 TOTAL: 7220 sq ft
 SIZES AND DIMENSIONS ARE APPROXIMATE, ACTUAL MAY VARY.

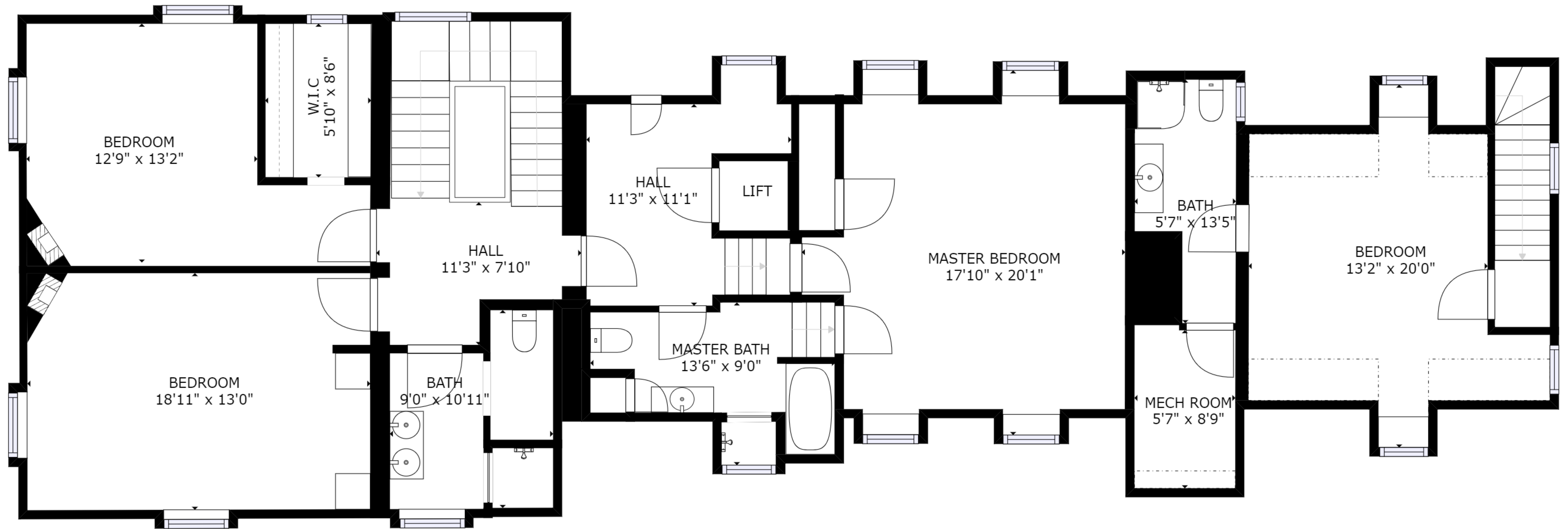
PLIMHIMMON
 26570 OXFORD ROAD
 OXFORD, MD 21654



FLOOR 1

GROSS INTERNAL AREA
 FLOOR 1: 1962 sq ft, FLOOR 2: 2988 sq ft
 FLOOR 3: 1682 sq ft, FLOOR 4: 588 sq ft
 EXCLUDED AREAS: , REDUCED HEADROOM BELOW 1.5M: 61 sq ft
 TOTAL: 7220 sq ft
 SIZES AND DIMENSIONS ARE APPROXIMATE, ACTUAL MAY VARY.

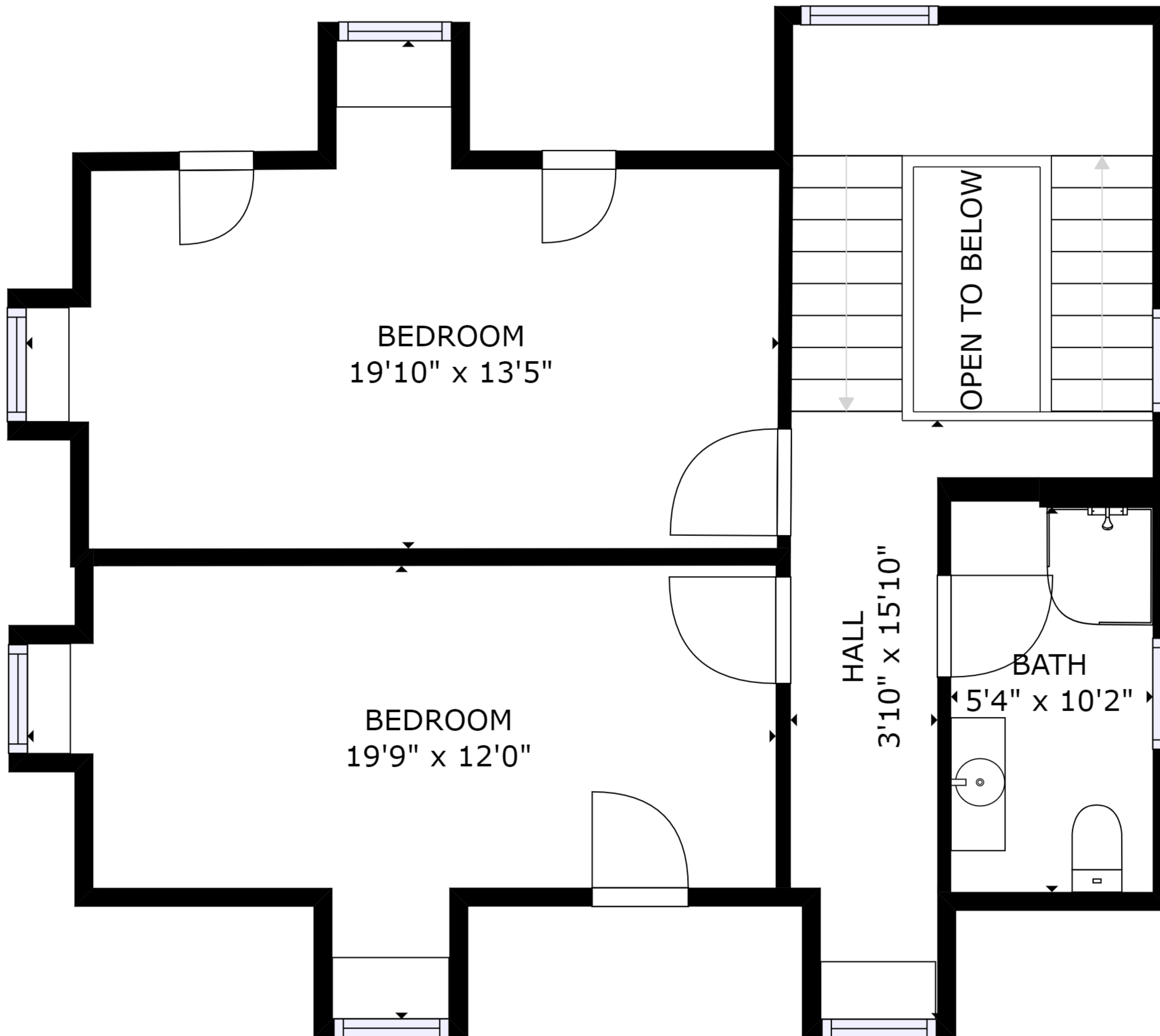
PLIMHIMMON
 26570 OXFORD ROAD
 OXFORD, MD 21654



FLOOR 2

GROSS INTERNAL AREA
 FLOOR 1: 1962 sq ft, FLOOR 2: 2988 sq ft
 FLOOR 3: 1682 sq ft, FLOOR 4: 588 sq ft
 EXCLUDED AREAS: , REDUCED HEADROOM BELOW 1.5M: 61 sq ft
 TOTAL: 7220 sq ft
 SIZES AND DIMENSIONS ARE APPROXIMATE, ACTUAL MAY VARY.

PLIMHIMMON
 26570 OXFORD ROAD
 OXFORD, MD 21654



FLOOR 3

GROSS INTERNAL AREA
 FLOOR 1: 1962 sq ft, FLOOR 2: 2988 sq ft
 FLOOR 3: 1682 sq ft, FLOOR 4: 588 sq ft
 EXCLUDED AREAS: , REDUCED HEADROOM BELOW 1.5M: 61 sq ft
 TOTAL: 7220 sq ft
 SIZES AND DIMENSIONS ARE APPROXIMATE, ACTUAL MAY VARY.

PLIMHIMMON
 26570 OXFORD ROAD
 OXFORD, MD 21654